



HOTELS

Project Orange
Architecture and Interiors

UNITED KINGDOM • IRELAND • MOROCCO • INDIA • RUSSIA • MONTENEGRO

www.projectorange.com

Contents

INTRODUCTION

Project Orange have been designing hotels around the world for almost 20 years. We enjoy the challenge of different cultures, new places and contrasting briefs. Our philosophy is always to create an original hotel that combines inspired design with intelligent logistics. We also believe that the process is a collaboration between all parties, and that the conversations along the way help fine tune the brand as well as the guest experience.

From rural retreats in Ireland to the busy Asian hub of Mumbai, our hotels exude confidence, maturity and excitement. Often we look to local crafts, materials and moods as a starting point for our concepts. In many ways each project unfolds like a chapter in a book of stories.

We hope you find this collection of photographs and images of our work as inspiring and stimulating to look at as we found in designing them.

Christopher Ash
James Soane

UK	Hoxton Hotel, London Chiswick Moran Hotel, London Eynsham Hall, Oxford myhotel Chelsea, London
Ireland	Radisson SAS Farnham Estate, County Cavan The Fitzwilliam, Belfast The Fitzwilliam, Dublin
Morocco	Kasbah Tamadot, Asni
Russia	Plus Seven Hotel, St Petersburg
India	Zone Hotel, Coimbatore The Park Hotel, Navi Mumbai The Park Hotel, Bangalore
Concepts	Chiswick Moran Hotel Extension, London, UK The Great 12 Hotel, London, UK International Hotel Concept, Worldwide My Fortune Hotel, Srinagar, India My Fortune Hotel, Guntur, India Room2, London, UK Historic Hotel, Southwold, UK Resort Hotel, Tivat, Montenegro The Poultry Hotel, London, UK The Park Hotel, Pune, India



Hoxton Hotel

Project Orange were asked to come up with a new bedroom and bathroom concept for an existing London hotel that was looking to create a compact brand. In this 16 square metre room we have designed an edgy, distressed and bohemian room that reflects the neighbourhood. We thought of it as a deluxe sleeper compartment of a train.

A huge built-in bed creates a snug area allowing the rest of the room to feel open. A long desk is integrated into the window wall with a plywood art/shutter for blackout. The bathroom pod features a circular glass shower that allows natural light into the red tiled bathroom. On the desk sits an urban picnic hamper.

World Festival of Architecture / highly commended / hotels



SUN YOU ARE ANFUI BUT I LIKE YOU
TUFF LUCK BY
FOOD AT THE MUSE IN MUSE & ROCK ON TOMMY

CHEEKY!
ERE, STOP WESSUP ADDI!
ROCK ON TOMMY

NICE TO SEE YOU
TO SEE YOU NICE

SHIT THAT
DOOH!
WHEELS A
PLAYWAYS

TIFFE
7E JOY
WHAT A
GAY DAY

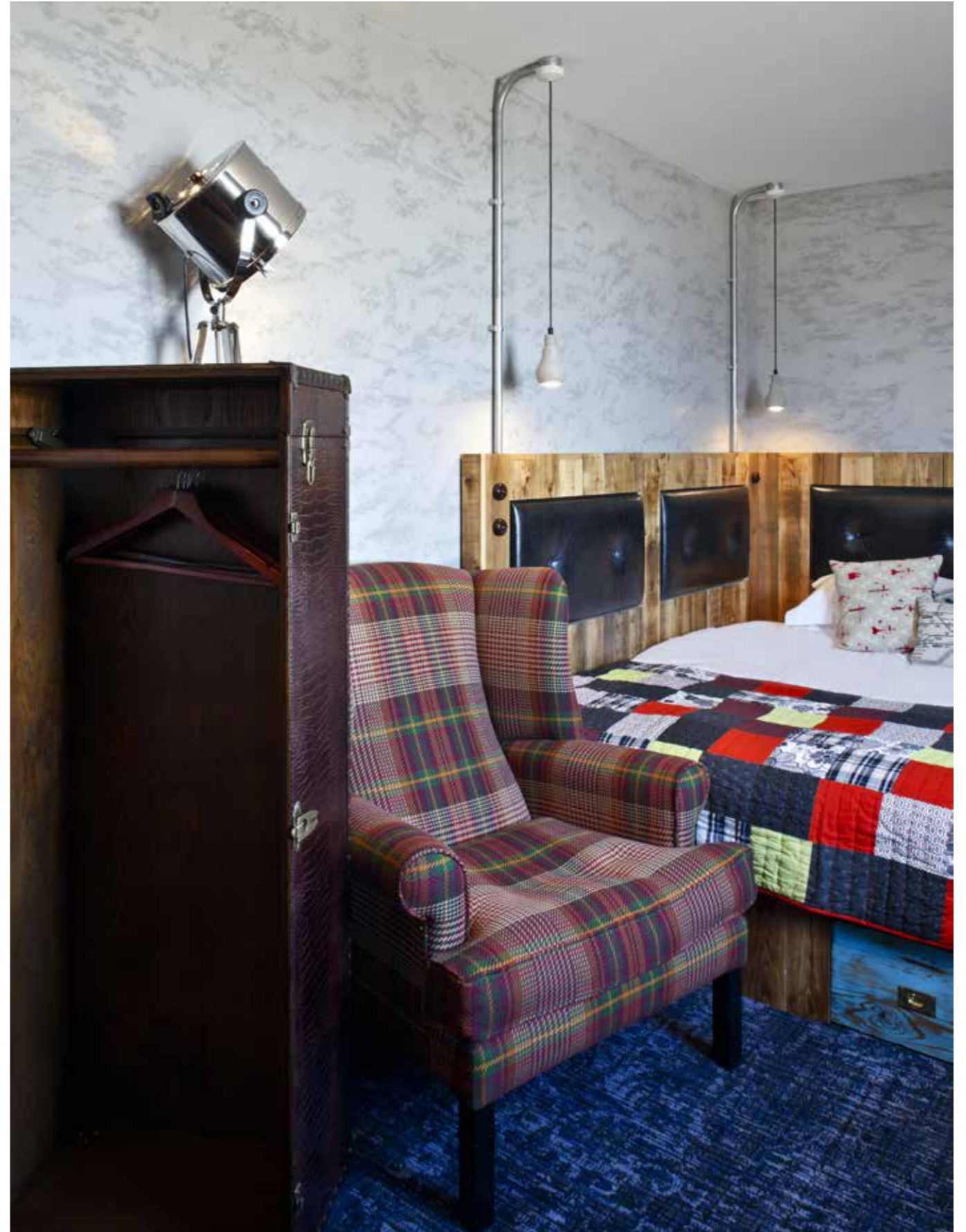
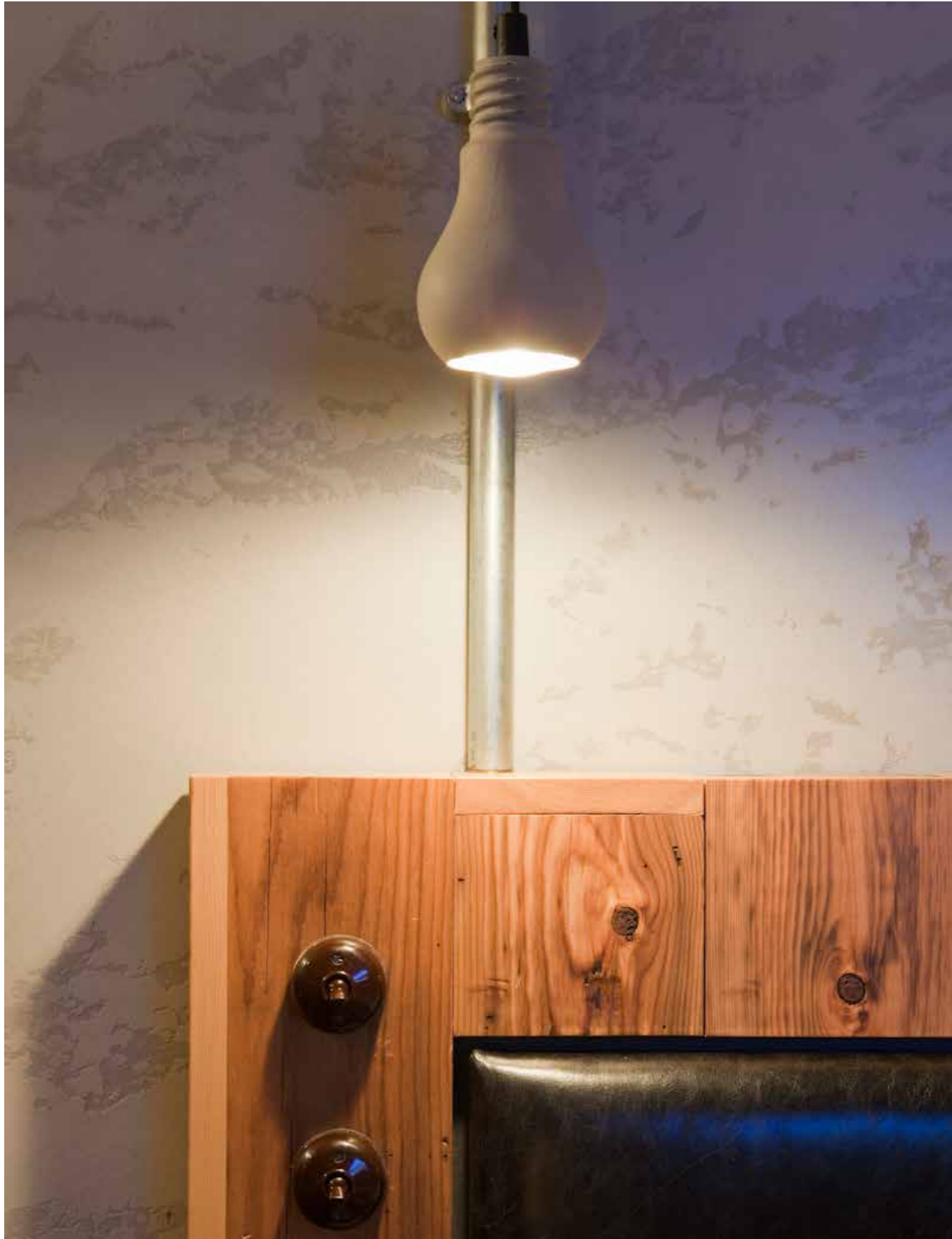
DING!
DONG

YOU DIRTY
OLD MAN!
STUPID
BOY

JUST LIKE THAT!

THE SEASONS OF THE SEASONS AND SEA BARRONHAY FROM BORN









Chiswick Moran Hotel

This 120 bedroom hotel is situated on Chiswick High Road in a vibrant quarter of southwest London. Housed in a 1960's former office building, the concept for the hotel is 'West Coast/West London'. The vibe is a contemporary evocation of 60's California, a response to the building's mid-century provenance and a link between this happening area of London and the glamour of LA.

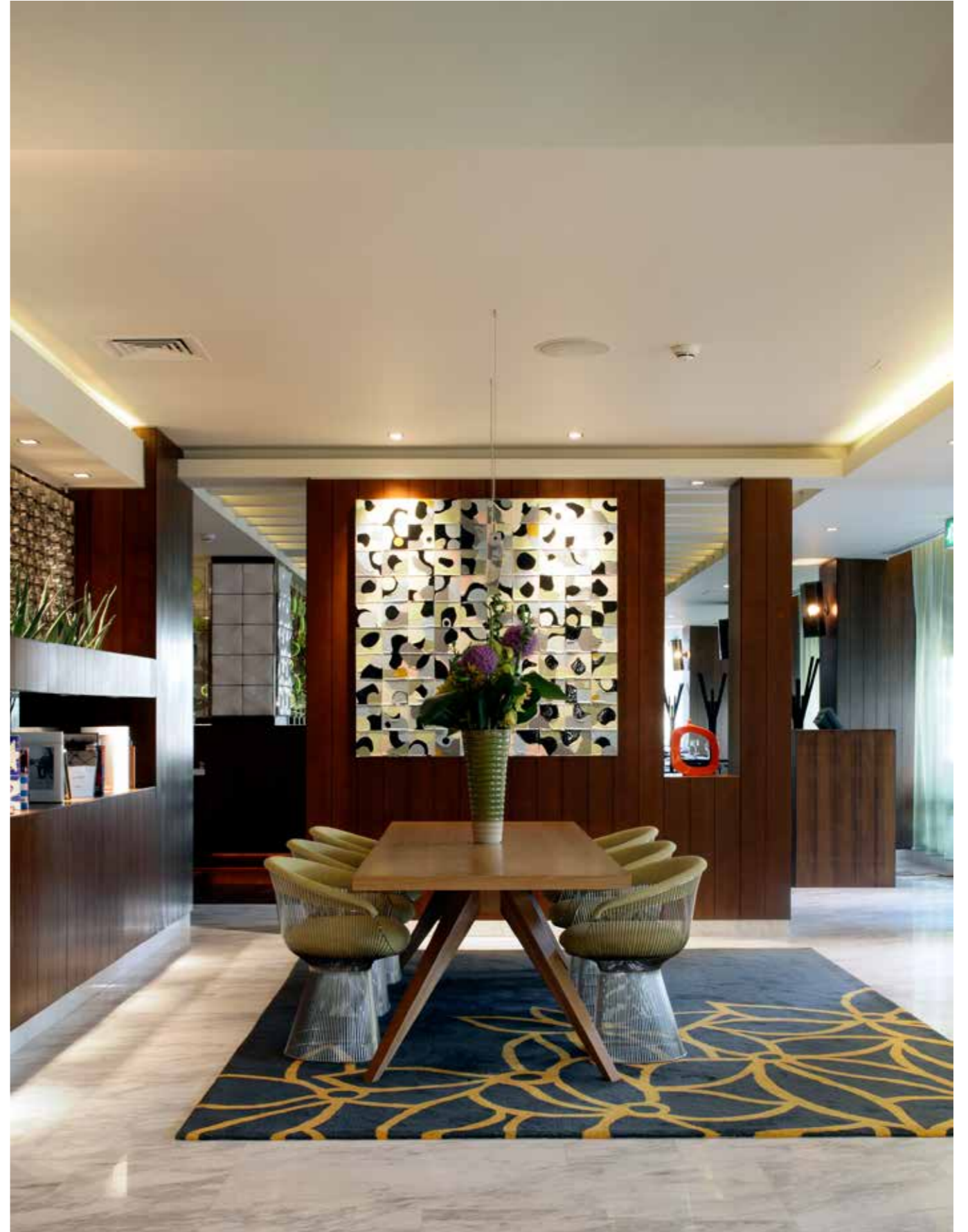
The hotel is announced by tropical palms and a sweeping porte-cochere, beneath a cantilevered concrete canopy. A palette of heavily veined marble and stained oak boarding unites a flowing sequence of lobby, bar and restaurant. Above the double height lobby is a vast bespoke polished steel and plexi-glass chandelier.

The Globe Bar takes its name from the huge shimmering globe that pivots between reception and bar defined by its fifteen metre counter in marble and burnt orange leather couches.

The restaurant goes by the name 'Napa,' synonymous with great quality and laid-back style. An aesthetic of cool marble, ebony laminates and crisp green leathers anticipate the fresh seasonal menu. A striking feature is a series of screens of polished stainless steel and rotating green Perspex ellipses affording glimpses into the residents' bar, a tucked away corner of moody smoked mirrors and cow hide upholstery.

Bedrooms are coloured according to the themes of surf, turf and desert. All have a full wall of glazing dressed with colour-washed voiles and graphic black and white patterned curtains. Carpets are shag pile, upholstery a combination of zesty woven linen and retro cream vinyl. Bespoke furniture is a cool and rectilinear combination of faux ebony veneer and mirror. Bathrooms are characterized by profiled ceramic tiles to an original 1960s design in tangerine, lime and slate grey. The fittings are similarly unconventional; the basin and WC are triangular.

FX Awards / finalist: Best Hotel









Eynsham Hall

Situated on the outskirts of Oxford in extensive grounds, Eynsham Hall is a magnificent countryside mansion. Completely remodelled in 1908 by Lady Mason, Eynsham Hall is a wonderful example of the Jacobean Style very much in vogue at the turn of the twentieth century.

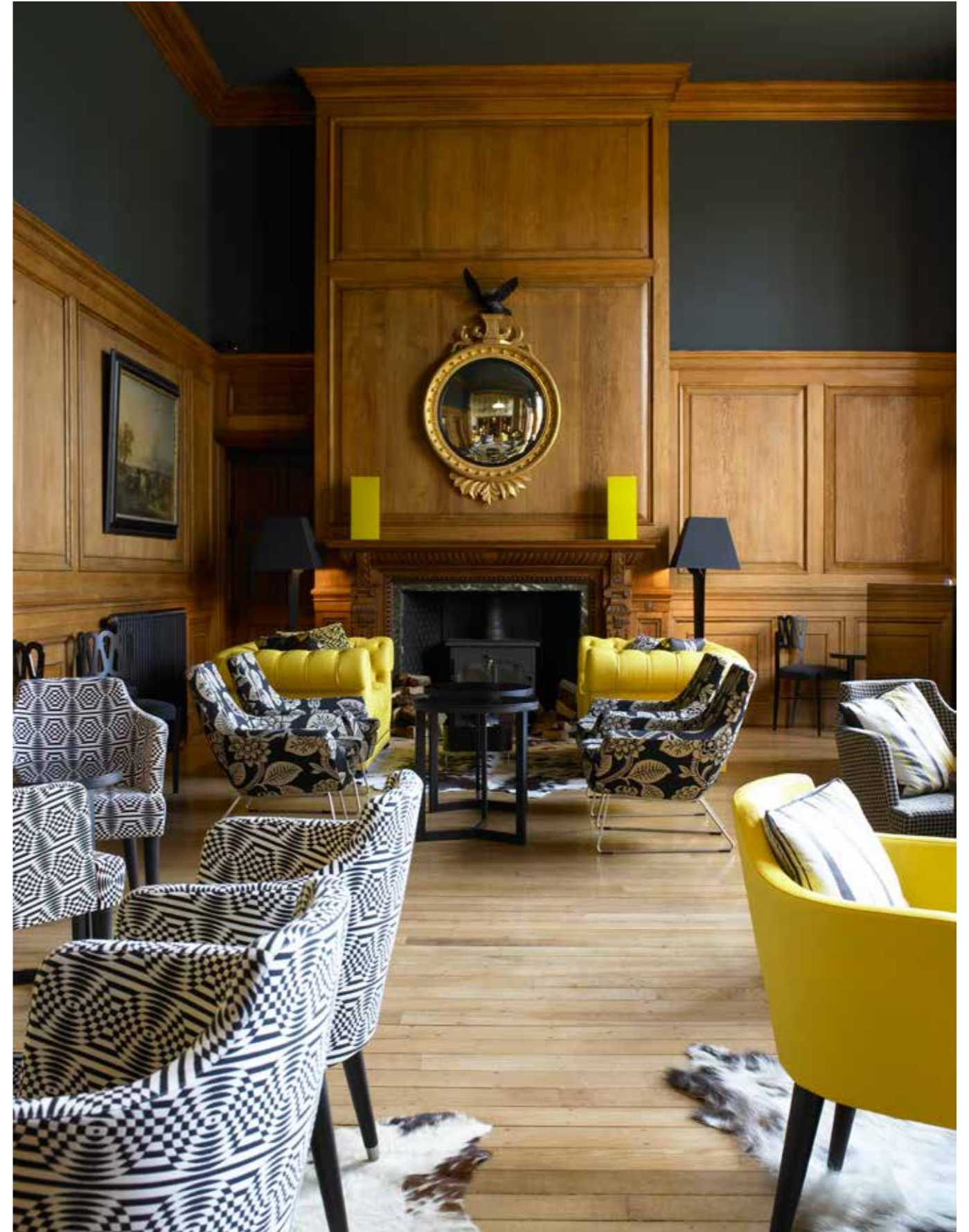
Initially Project Orange were invited to redesign the hotel bar in order to test design strategies and methods for modifying a historic building such as Eynsham. Originally the gunroom for the Mason family's collection of firearms, the new bar, now known as The Gunroom, fuses old with new, with a touch of art deco glamour. The original oak panelling has been carefully restored and, against the warm oak finish, you can now find traditional Chesterfield sofas and classic tub chairs upholstered in canary yellow leather and pop art inspired fabrics. The bar counter is an island of decadent black glass and polished chrome, sitting in the gigantic leaded bay window overlooking the grounds.

The impressively high ceilings have even helped to find a home for some of the estate's vast collection of antlers.

Following the completion of The Gunroom, we turned our attention to the guest bedrooms; all greatly in need of refurbishment. With no two bedrooms alike on the first floor of the hall and with a series of very tight bedroom layouts to the second floor, we were presented with a very difficult design challenge. Our proposals add a touch of English Eccentricity to the building's heritage. The interiors take their inspiration from the glorious heritage of the site and feature Edwardian fabrics matched with contemporary patterns. Using materials such as copper which have strong links to the history of the building and design, which responds intelligently to the unique spaces.

European Hotel Awards / winner:
Best Interior Design













myhotel Chelsea

myhotel Chelsea is a 45 room urban retreat in the heart of Chelsea, situated behind Brompton Cross within easy access of the fashionable shops and restaurants. It feels more like being in a modern country house than in the middle of the metropolis. The colours and textures are deliberately mixed up to create a sense of authenticity and history. The scope of the project was to give the property a completely new identity without changing anything structurally.

On the ground floor the pink lobby leads to the bar and reception. The bar is clad in gloss white painted timber strip boarding while the counter is topped with polished pewter metal. Two doors open up onto the external deck and on one side is a new simple chrome fire surround with a mirror above. The conservatory opens off the pink ivy wallpaper-lined lobby with a view through the fish tank back into the reception. Along two sides are large clap-boarded walls finished in pale green, punctured by chrome portholes through to the gym and treatment room.

Upstairs the bedrooms have a convincing familiarity, as though they are in a house one remembers staying in. The floor is carpeted in a subtly patterned grey and purple texture, while the walls are chalky white and pale pink. At the windows there are full length toile curtains in cherry red. The bed has a woven bed head by Lloyd Loom and covered in an array of cushions and a soft satin throw. The desk is a simple dark oak piece while opposite the bed sits a long horizontal Elm cabinet housing the fridge, stereo and TV. Two bedrooms behind the bar have a distinctly different character, decorated in a palette of hot reds, clashing pinks and burned claret. They are best enjoyed at night with their luxurious 'polar bear' throws, erotic photography and moody lighting.





Radisson SAS Farnham Estate

Project Orange created a luxury spa destination with global appeal. The unique setting of Farnham House, Ireland in over 1300 acres of grounds provides a genuine sense of escape.

The existing Georgian Farnham House is the historic linchpin that is at the heart of the hotel and acts as the counterpoint to the contemporary new buildings designed by Gilroy McMahon Architects.

Our interior design provides a variety of moods and experiences that connect outside and inside. Inspiration was taken from the colours and textures of the surrounding landscape; from the grey/blue stone garden walls to the lichen covered tree trunks. This connection to the locality provided a calm and naturalistic palette of materials and colours, which are soft and holistic.

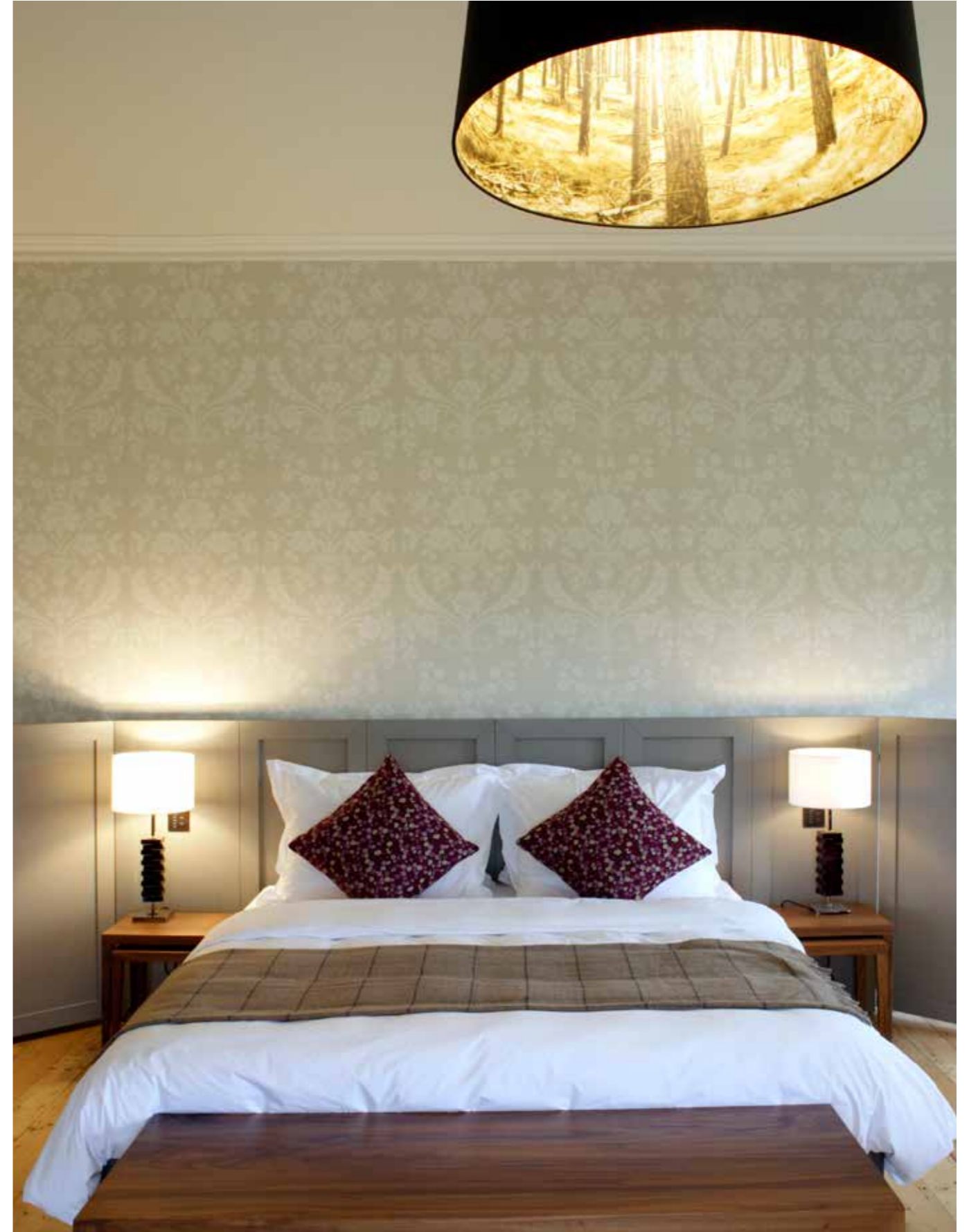
The dramatic glazed lobby links the old house and the new bedroom blocks. At the far end is a raised bar deck leading into the restaurant.

From the reception, a series of enfilade rooms that are part of the original house have been renovated and individually decorated. The restaurant has a cosmopolitan ambience with the emphasis on food – we called it a ‘deli-barn’ referring to the barrel-vaulted ceiling. An external link takes guests to the huge banqueting hall and business centre with its glowing marble bar.

The bedroom design is characterised by the bull-nosed curved timber wall concealing the wardrobe and a sliding door, which can be opened to connect the bathroom and the bedroom. The bed is located within a hinged timber backboard. At the end of the bed is an antique chaise longue on tiny brass castors and upholstered in an Eames fabric, allowing the guest to relax and watch the flat screen TV or simply to read. In addition to the 148 standard rooms, there are 10 suites.











The Fitzwilliam Belfast

The Fitzwilliam Hotel Belfast is located adjacent the Opera House and is the sister to the original Fitzwilliam Hotel in Dublin. With 131 bedrooms, a glamorous bar, 150 cover restaurant, private dining and dedicated conference facility, the new build hotel offers Belfast five star luxury in the heart of the city.

The design plays on and develops themes that marry references to the traditional baronial mansion with modernistic/deco styling.

The main lobby and reception renders this theme in a sophisticated palette of oak, lacquer and marble, accented with furnishings in black, white and gold. The bar is deliberately moody and quite dark, tucked away behind the lobby and lined with intimate booths. The restaurant plays with ideas of the panelled room and with openness and enclosure. The three distinct rooms are lined with intimate dining booths and divided by rotating oak mobiles.

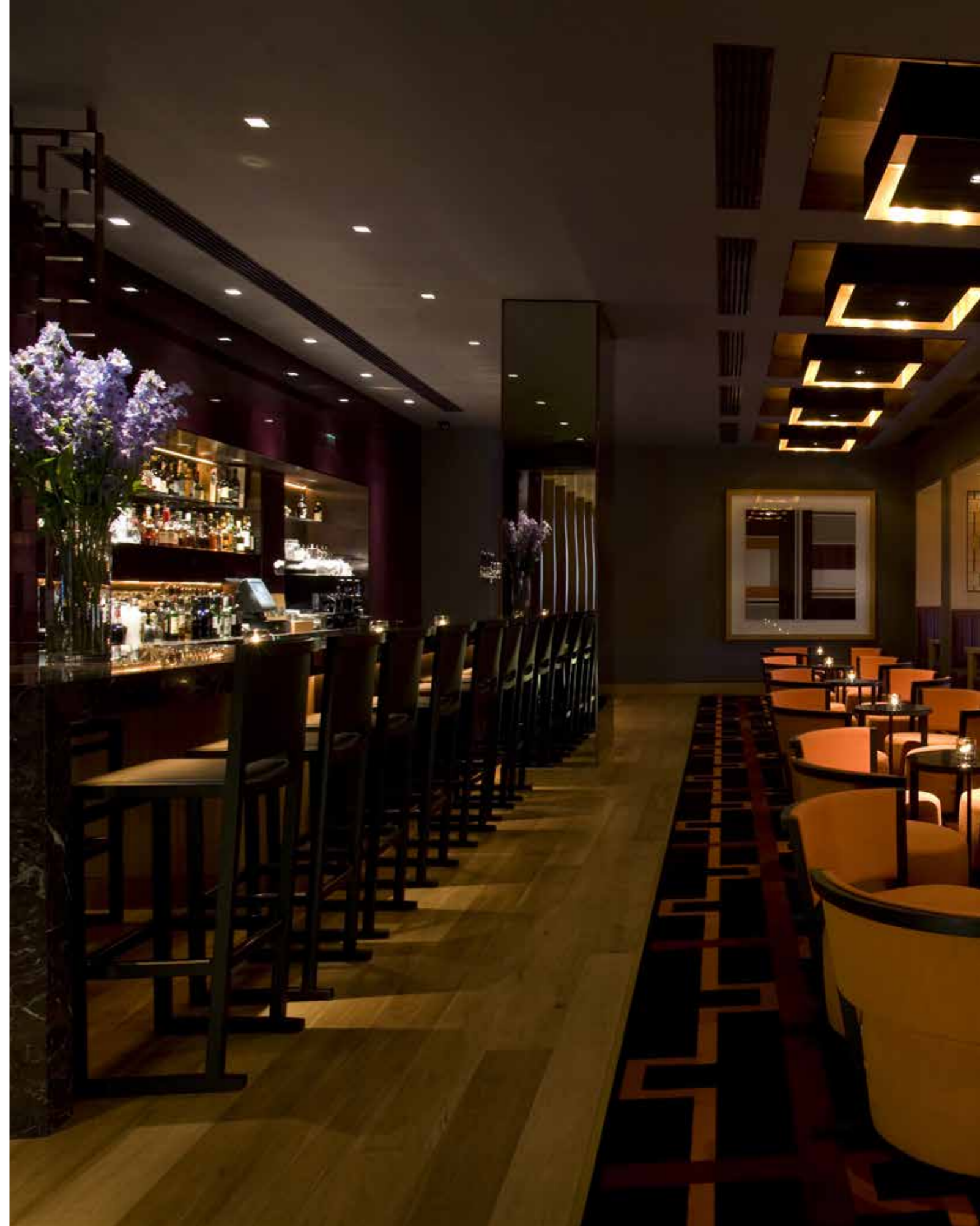
The bold, graphic theme extends to the bedrooms, which use off black wall panelling juxtaposed with accent colour schemes; amber yellow and emerald green. Again, the carpet is bespoke by Project Orange abstracting a bold 'F' motif into a deco inspired pattern reminiscent of a Greek key design. The bathrooms reduce to a monochrome palette, with daring black and white mosaic tiling set against a giant expanse of mirror. Nearly every bedroom offers a view direct from bed to the Belfast hills beyond the city.

Superior rooms are located at the principle corner of the building on every floor and offer panoramic views out across the city. The bed and desk form an island in the centre of the room separated by a low panelled screen. This lies on axis with a feature bathroom, opened to the bedroom by simply folding back the panelled shutters.

European Hotel Design Awards /
short-listed: Restaurant









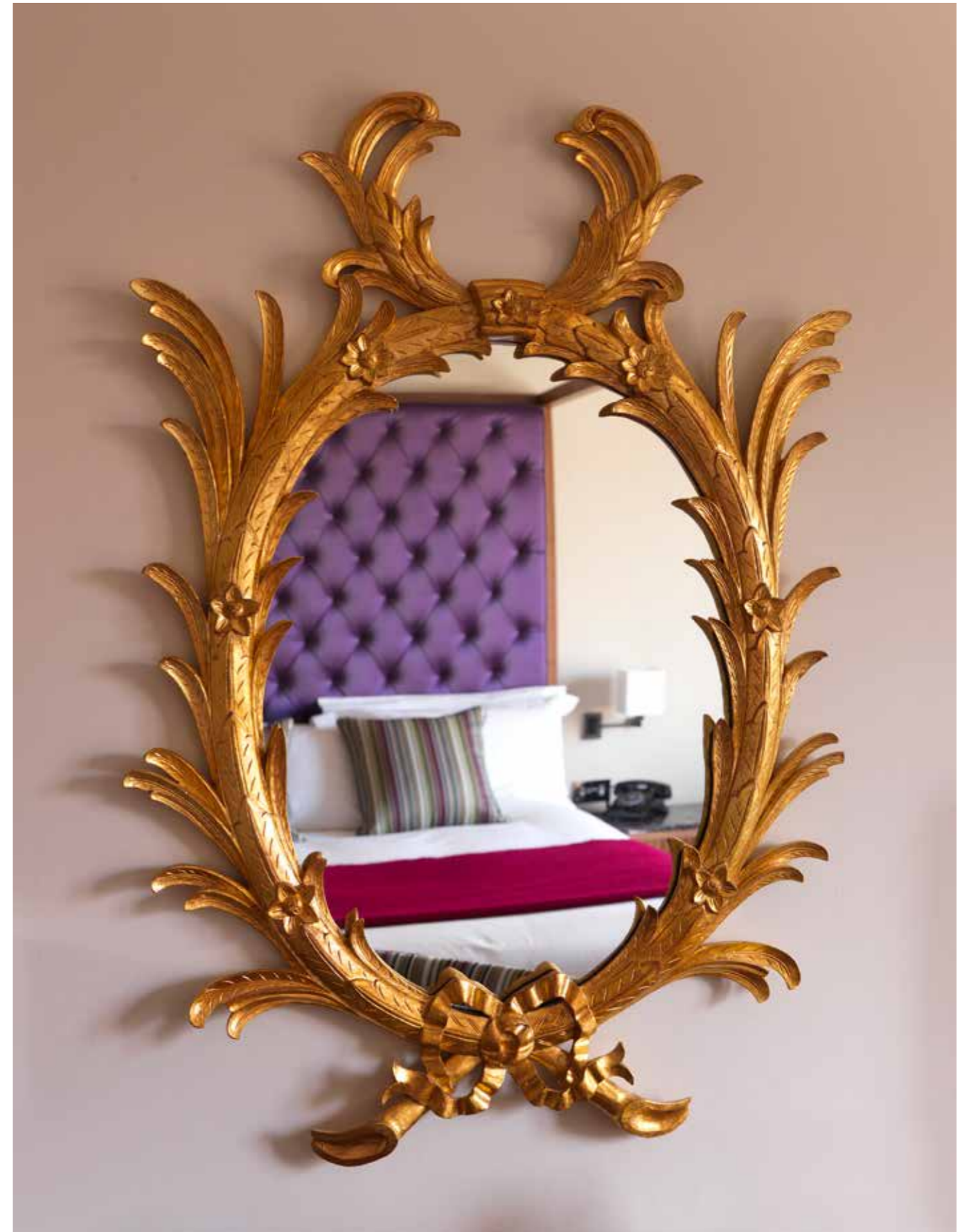


The Fitzwilliam Hotel Dublin

The bedroom refurbishment of The Fitzwilliam expands further the 'Baronial Moderne' concept of the original hotel, implemented previously.

The use of bold colours in a series of graphic, almost heraldic patterns plays on and develops the signature aubergine colour scheme. New quirky furniture elements, designed by Project Orange, together with retro touches such as Bakelite telephones and embroidered satin headboards complete the new interiors. Both playful and sophisticated it is a vibrant development of the hotel's identity.











Kasbah Tamadot Hotel

Kasbah Tamadot is a magical walled house set on the side of the rolling hills of the High Atlas Mountains. It overlooks the valley down to a river below and in the distance there are the snow-capped mountains. The refurbishment of the building has been extensive, though the character and charm of the original complex of spaces has been retained and enhanced. Our design concept has been to marry traditional Moroccan colours, textures and patterns with a more contemporary treatment to the interior architecture. The contrast between old and new, bright colours and muted, craft and technology provide a counterpoint that singles out the Kasbah as being unique.

The Kasbah is a complicated plan of staircases, courtyards, rooms and gardens. On the entrance level are three bedrooms, two internal courtyards, the spa and access to the outside pool and the studio.

Our design for the infinity edge swimming pool creates a stunning vista within the garden and allows guests to enjoy extraordinary views. A main stair leads up to a painted courtyard around a deep blue reflecting pool. Opening from here are a series of bedrooms, the salon and the restaurant with its stripy floor and enfilade balcony.

Each bedroom in the Kasbah is individual and has been designed according to its aspect and special antique features. The original design featured many artefacts that had been collected by the previous owner from all over Africa, the Far East and India. As a result there is a very eclectic series of elements including wooden ceilings, ancient chests, heavily carved cupboards and an assortment of every day bric-a-brac.





Plus Seven Hotel

Project Orange were invited to work on the first independent design hotel in St Petersburg. The design aims to fuse the classical history of the city with cutting-edge design. The bedrooms in the old building are opulent and elegant, while the public spaces are cooler and more pared down. The lobby is up a half flight of black marble stairs that leads through to the courtyard restaurant and lounge. The restaurant is situated in the heart of the building but top lit by a large skylight. A parquet floor and large backlit historical painting recalls the city's 'Silver Age' juxtaposed with the glossy red lacquered chairs and tables. Adjacent to the restaurant, the 'Jet' bar is an extremely dark space with flashes of gold reflecting in the black gloss walls.

The route up to the bedrooms is along moody grey painted corridors. A black moulded door leads into the black and white 'Toile' wallpapered lobby containing the wardrobe and door to the bathroom. This room is tiled in black brick tiles with a gold painted ceiling, while a washstand sits beneath a decorative gold mirror. Within the bedroom the walls have been given a skirting, panelling and a cornice to re-create a classical space. A tall walnut padded headboard fills one wall and the bed is finished off with a fur throw with a specially designed circular bedside table on either side.

Overall the look of the room is eclectic; a collection of personal choices that have been gathered over time. It feels like staying in the room of a grand house rather than a hotel.





Zone Hotels

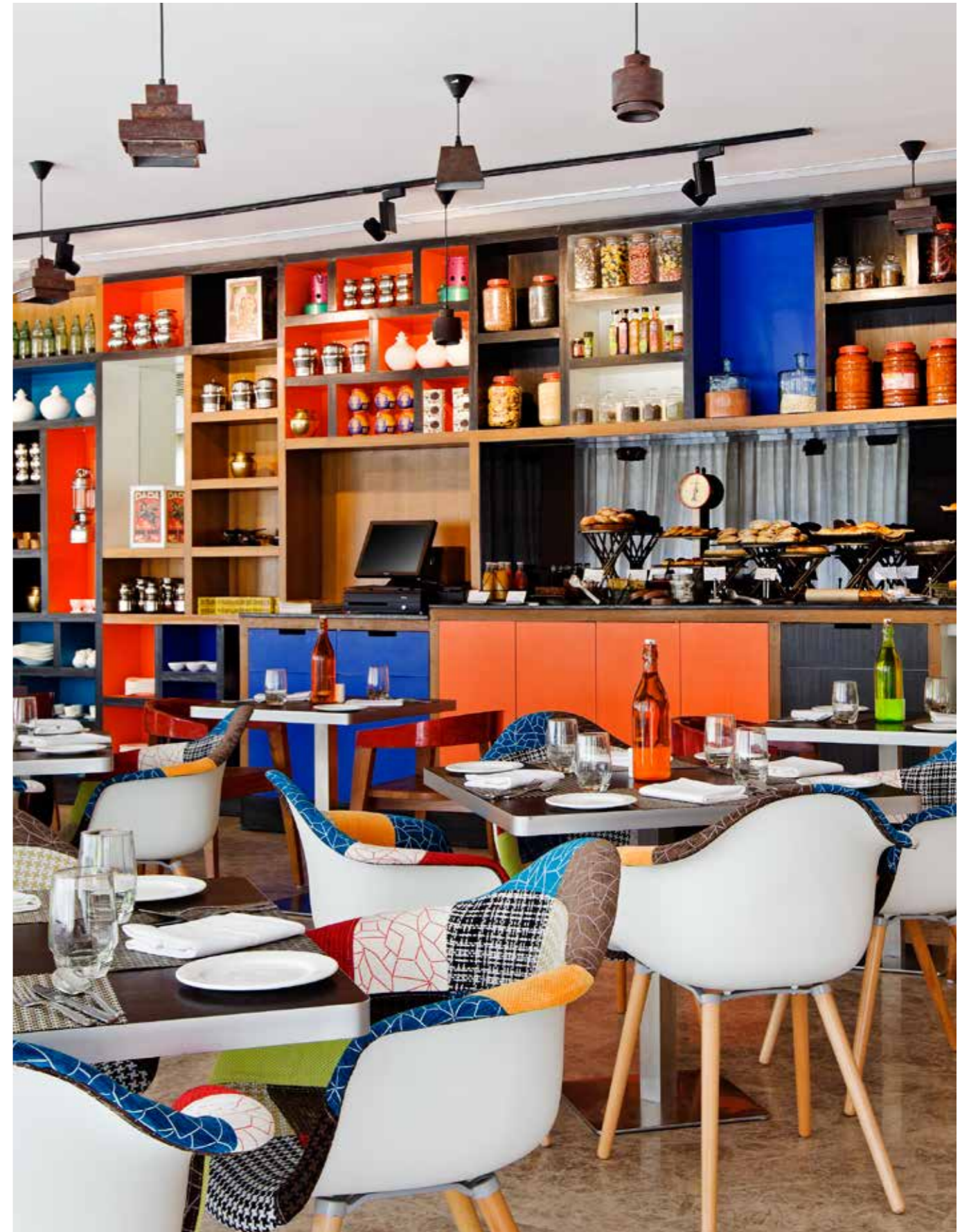
Project Orange developed the design of a new 4* hotel chain concept for the Indian market. The brief was to create design concepts and outline proposals for a typical 100-room hotel, targeting a younger generation of techno-savvy clientele and creating a community hub for guests.

The design seeks to establish a connection between the traveller and the place by creating a contemporary collage of the country and its traditions.

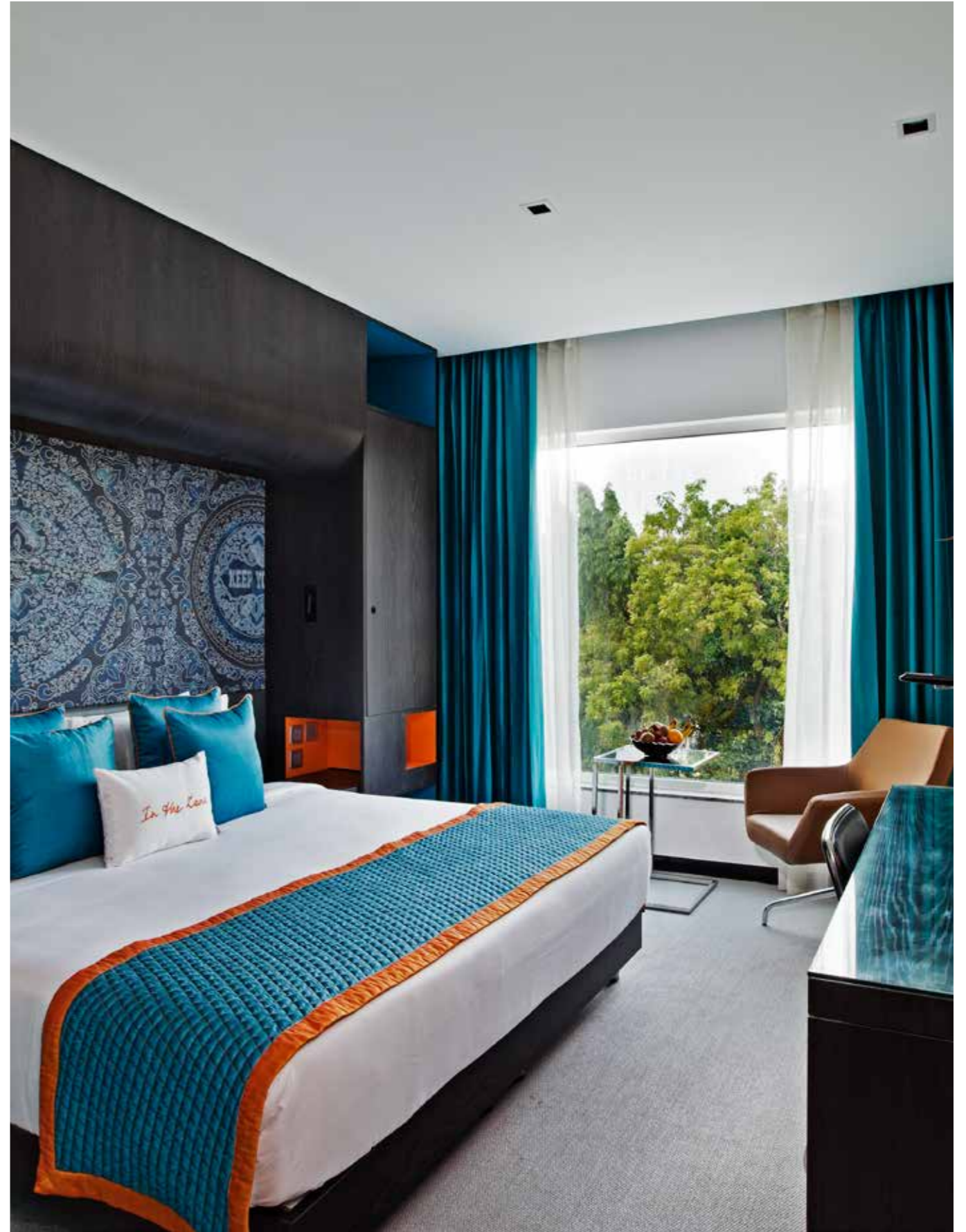
For the public areas, inspiration was taken from the traditional market bazaar – a public place of interaction where people meet, engage and come together. As such, the concept is conceived as an intuitively organised large open plan space with focal points of interest for different guests.

The proposal for the guestroom is stripped back with a design edge and is zoned into areas of activity; a large piece of bespoke black oak joinery with playful coloured recesses creates the Dream Zone – a place to rest your head after a busy day; a cleverly designed desk encompassing the mini bar, tea tray and TV connectivity points forms the Work/Play Zone for business and leisure use; and the perfectly formed 'shower only' bathroom becomes the Wash Zone.

Zone Coimbatore, Zone Jaipur and Zone Chennai are all completed. Zone Raipur, Zone Mahabalipuram and Zone Jodhpur will follow.









The Park Hotel Navi Mumbai

The ambition behind the latest Park Hotel was to create an iconic hotel for New Mumbai. The interiors mix traditional Indian patterns and textures with clean lines and modern shapes, bringing together East and West. The facilities include reception, bar, coffee shop and poolside area on the ground floor as well as the 'Bamboo' restaurant seating up to 60 people. On the upper floors there is a large banqueting hall adjacent to three interconnecting business suites. The bedrooms are arranged around an enclosed atrium, bringing natural light into the circulation areas. On the top floor are larger rooms with a larder facility for long stay guests; there is one master suite, a gym and small spa.

The building had been abandoned for 20 years, never having been completed. We installed a window system and painted the building white. By night the elevation is illuminated by amber and blue LED lights.

The poolside terrace is characterised by a huge abstract glass mosaic pattern in blues, greys and oranges creating a graphic backdrop for the dramatic black elliptical pool. To the rear of the building is our 'white' garden. Inside, a free-form series of pods on the ground floor have been inserted. The orange plastered bar breaks out to address the terrace, while the reception zone houses the snug and is clad in hand-finished plaster Jali.

The bedrooms are generously proportioned with high ceilings, decorated in a classic neutral palette lifted by flashes of bright colour. The bathrooms all have huge showers and a teak vanity counter the length of the room, which is clad in pristine white tiles. The wardrobe is a one-stop-shop for the guest containing hanging space, a safe, a fridge and a tea tray.

Project Orange designed all the furniture and most of the fabrics for this project.









The Park Hotel, Bangalore

For the refurbishment of the Park Hotel, Bangalore Project designed the new i-bar, Monsoon Restaurant and the spa and poolside area known as Aqua.

The new i-bar is luxurious, mysterious and decadent. It uses traditional pink sandstone and carved timber screens. The layout is understood as a box within a box, where the inner sanctum is accessed via the sliding timber screens. This area has a lowered ceiling and features a collection of furniture all covered in red leather, silk and cotton. The floor is covered in a number of individually designed textured rugs by Project Orange.

For Monsoon, we were captivated to discover that Karnataka is home to some 318 species of Butterflies. Some travel as much as 3000 miles in their short lives – so they represent another kind of traveller. We wanted to embed this motif into the walls of the space so designed a series of panels with intricate inlay work depicting groups of dancing Butterflies.

The dark timber walls are of Wenge and inlaid with oak, walnut and sandalwood.

At the front of the room there is a long sofa, embroidered with butterflies, with tables for two that can be combined. A special collectors shelf has been created in the opening, allowing views to and from the lobby.

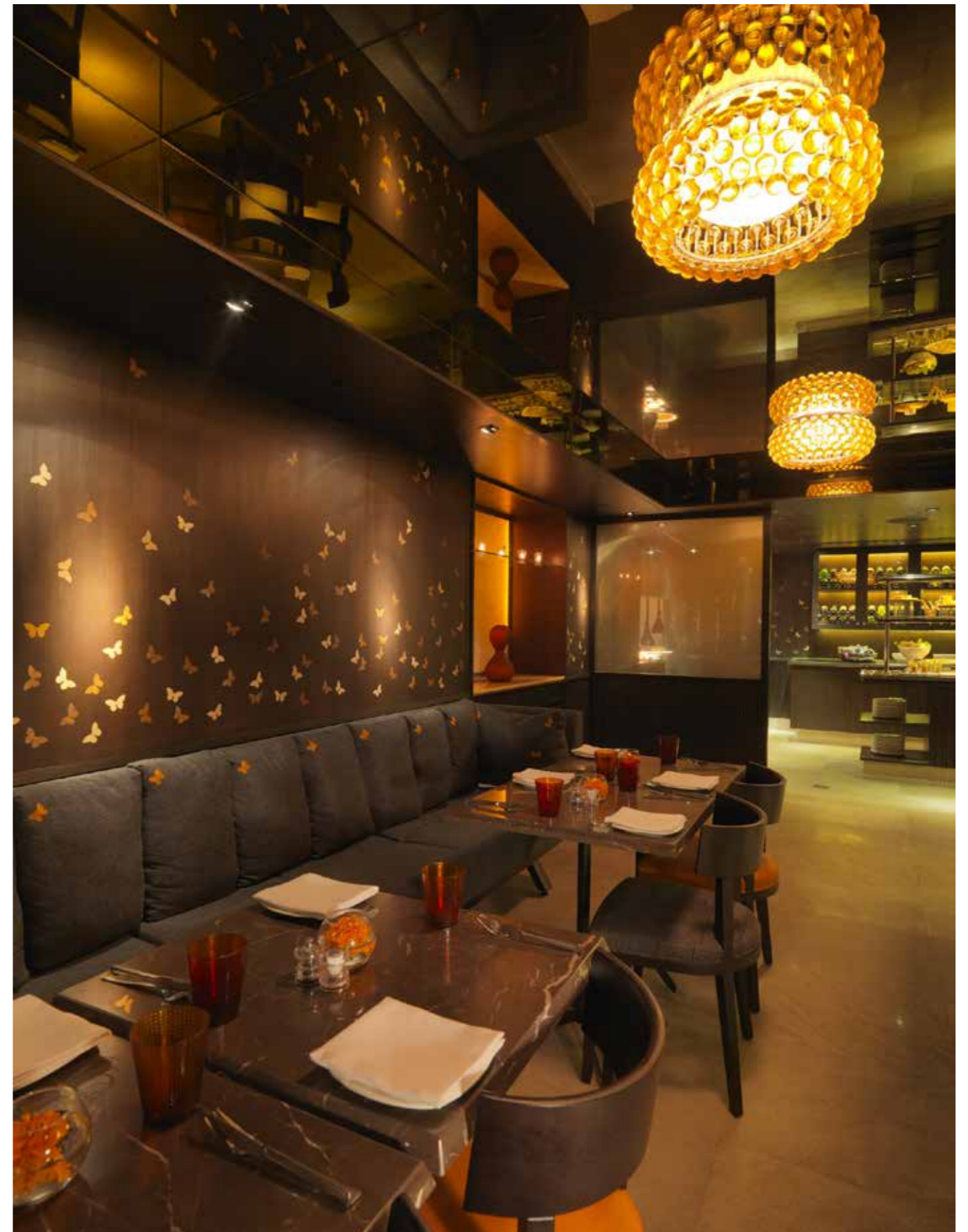
Acqua, the poolside haven and event space is so popular, and the climate in Bangalore perfect for all year round outdoor eating and drinking. We proposed two pavilions that sit at either end of the linear pool. These steel structures have teak windows that can be opened up in the evening and adjusted for shade during the day. One pavilion contains the bar while the other is for dining and both have roof level decks.

The spa and gym is accessed from a new staircase that leads down to a calm retreat clad in local pale marble with discreet ambient lighting, creating a modern sanctuary away from the frenetic city.

FX Awards / finalist: Best Bar Interior

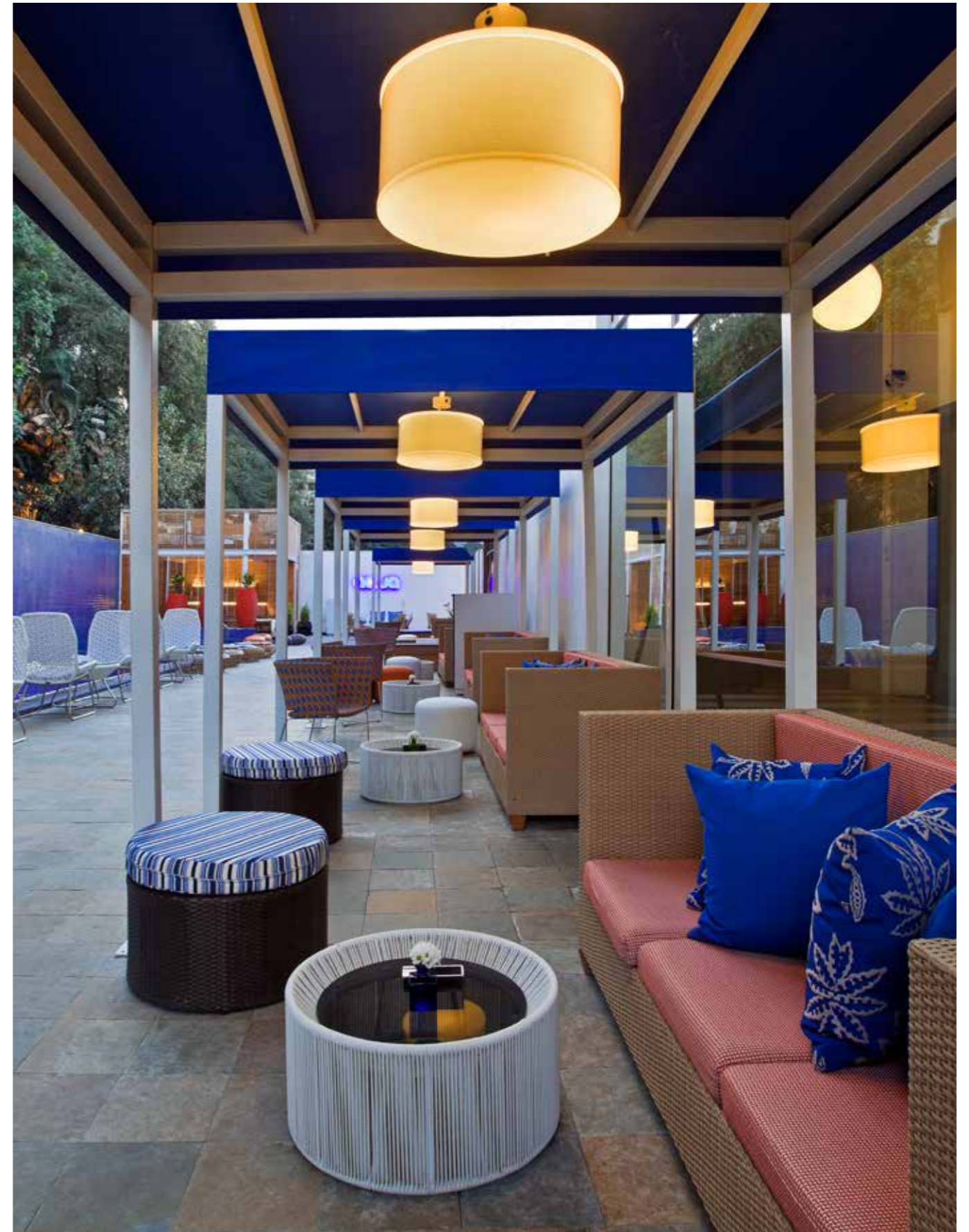














Chiswick Moran Hotel Extension

Following the successful launch of the original hotel, we were asked to design both the architecture and interior fit-out for a large extension to the original hotel. The extension provides 85 additional bedrooms, plus conference and banqueting facilities.

The monochrome palette of the exterior of the building is carried through into the interior design of the bedrooms which marry black and white finishes with pale oak and signature accent colours in bold graphic print textiles. The new rooms compliment the original hotel design while retaining their own identity.





The Great Twelve Hotel, London

Project Orange designed the interior concepts for a luxury, boutique hotel in the heart of the City London.

The long traditions of trade and commerce are brought in from the City to inform the design of our bespoke boudoirs and suites.

Our concept shares the values of the twelve neighbouring guilds and reflect a history of weaving, forging, gilding, cabinetry and craft. The custom of Inn keeping and hospitality is central to the experience of our guests, inviting them to spend time in the heart of this contemporary hotel that reflects the ever changing spirit of London.







International Hotel Concept

Project Orange has designed the interiors for a new, international, concept hotel aimed at immersing guests in their immediate environment and physically connecting them to their city.

The concept is to treat the guest as an explorer, inviting them to discover a C21st urban ecosystem.

Public areas have a loose fit with zones that can easily be re-purposed, inhabited and transformed into a landscape of collaboration.

By contrast the bedrooms are highly bespoke cabins offering robust yet charming environments for all. Flexibility is offered across a wide range of bedroom types from a four-person bunk to a flexi-double that could sleep three people, as well as more traditional double rooms.







My Fortune Hotel, Srinagar

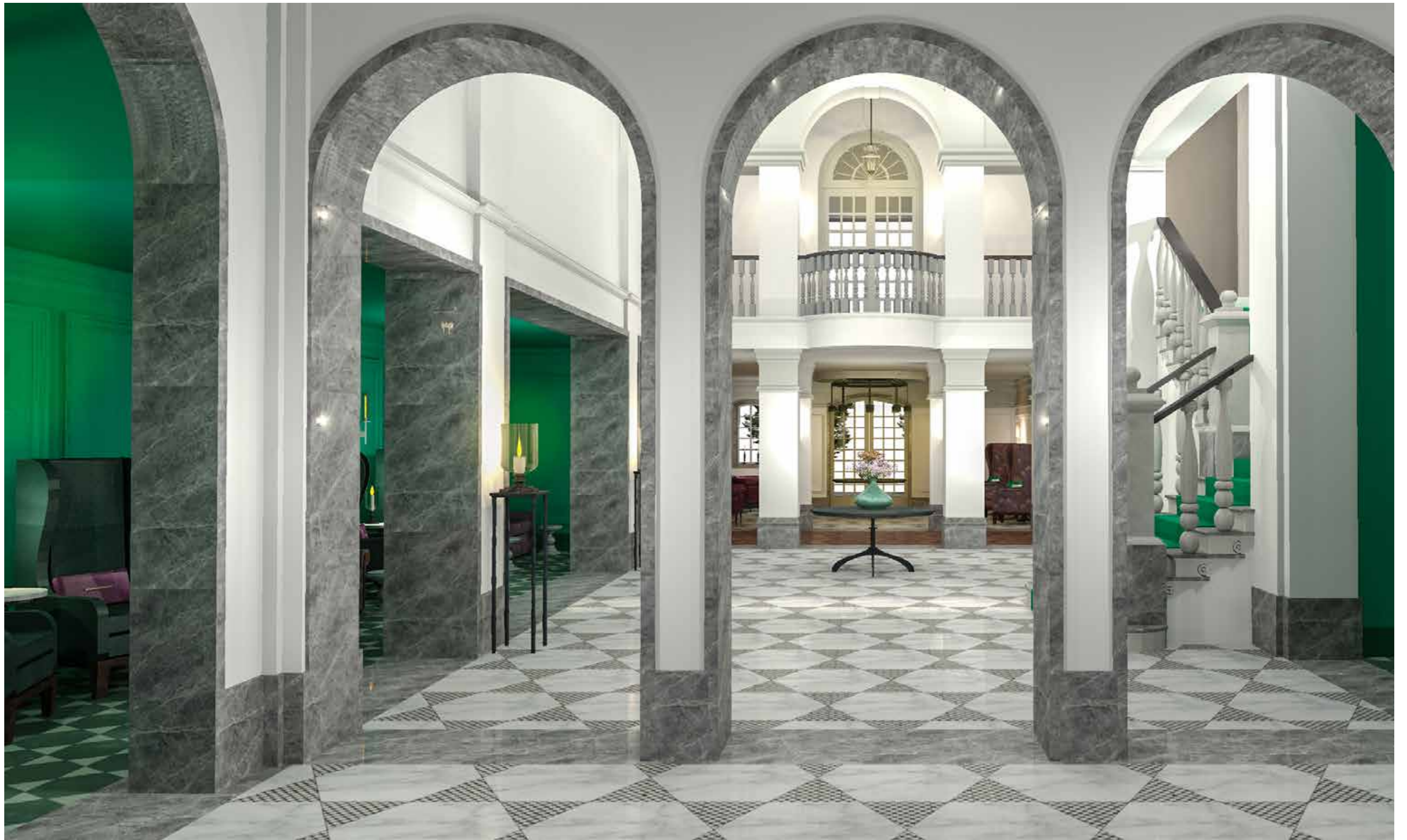
The extraordinary legacy of the old Nedous Hotel is being brought into the C21 st. Originally built in the years 1854-1860, this is one of India's oldest surviving hotels of its kind. Project Orange has been appointed to take on the interior design throughout this ambitious project. The project seeks to completely restore the hotel, respecting its old charm and ambience while enhancing the vision of the past with a vision for the future.

The reborn hotel will be a sanctuary, a place to rest and a centre of excellence.

Our concept is to fuse historical references with contemporary details. Sited in a wonderful garden, the hotel has a nostalgic presence that is brought into focus by the craftsmanship of the refurbishment. Within the hotel, the historic rooms have been remade to reflect the Victorian panelling, then furnished in a modern way.









My Fortune Hotel, Guntur

Our next hotel for the My Fortune brand, developed by ITC Hotels is located in Guntur, just 40 miles West of the Bay of Bengal.

Our concept for the hotel was to immerse guests in the spirit of the region drawing on the tropical climate and beautiful botanical surroundings, complemented by the traditional elements intrinsic to all My Fortune Hotels.

The bedrooms aim to create a relaxed, luxurious but business like environment for guests, while introducing traditional elements such as decorative screen work to the bathroom doors and a statement bed with turned posts and carving.

The majority of the public spaces are double height, which create a series of dramatic volumes. These have been layered and divided through the use of screens, metalwork and bespoke light fittings to create a rich interior, reflecting the colours of the region ranging from the vibrant greens found in the chillies specific to the region to the distinctive colours of peacock feathers also native to the area.





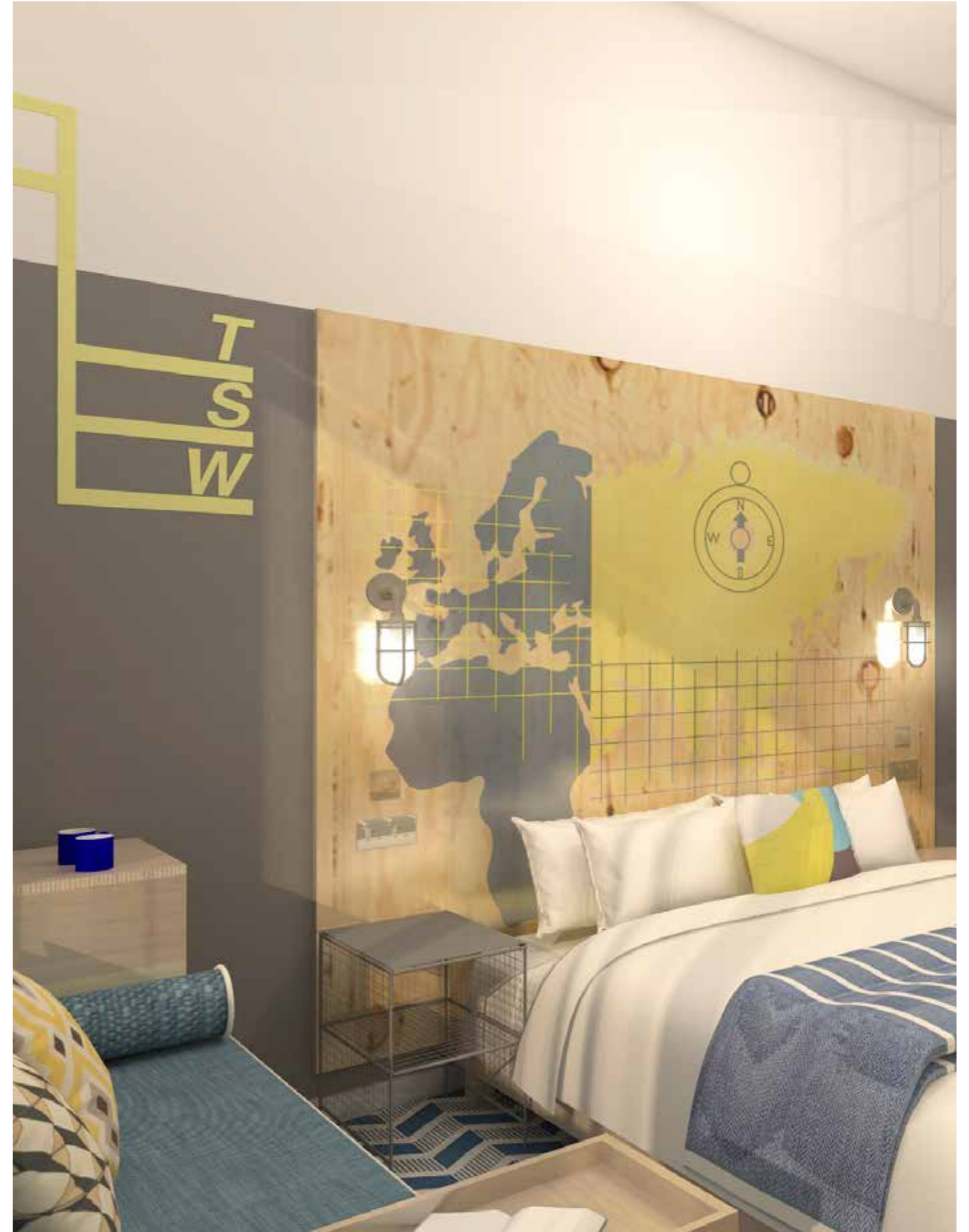
Room2

Room2, Chiswick is the first new build apart-hotel from the Room2 Brand. The brand is an innovative concept, combining all the convenience of an apartment with the luxury of a hotel. Intended to offer guests choice in both the experience within the Hotel and benefits of the wider community via extended stay in a location. Room2 apartments are available to rent from 3 nights to 1 year. The modern apartments offer kitchens with cooking and washing facilities and include living, dining areas and sleeping areas.

Project Orange are also responsible for the architecture which, has evolved from the inside out as much as the outside in and is conceived to be in keeping with the emergent concept for the Room2 brand. This is individual, eclectic and as bohemian as it is metropolitan. The building in this instance makes reference to the classic loft apartment warehouse conversion where a simple exterior serves as a foil to a rich and individual interior.

We are also working on Room2, Southampton and Room2, Glasgow.







TOP DECK

2 3 7



Historic Hotel, Southwold

Project Orange have been commissioned to prepare proposals for an extensive refurbishment of a historic hotel located in the charming, coastal town of Southwold.

Owned by a local, award winning brewery and distillery, the hotel has close ties to the industry.

The hotel comprises 30 thirty bedrooms in the main building overlooking the market place, with additional accommodation in a series of outbuildings. A restaurant, lounge, bar and a series of function rooms are also located in the main building.

We have drawn heavily on the rich history of the brewery's own heritage to create a design that it is innovative and distils the essence of Southwold.

The restaurant, known as the Still Room focusses on key motifs used in gin distillation including a dramatic copper back bar formed to resemble distillery funnels.

The tap room offers a more cosy setting to sample the vast array of local beers on tap, with a light coastal theme including traditional ship's rope lights and the brewery's signature blue colouring.

The guest bedrooms have a very natural palette inspired by the neutral colouring of hops and barley; the main ingredients in the brewing process. We have designed a custom piece of furniture as the main room feature, keeping the television out of sight and placing a guest bar and therefore the brewery's brand at the heart of the bedroom. The bathroom takes inspiration from the drawings of Heath Robinson and equipment used in the brewing process, resulting in a truly eccentric and unique bathroom design.







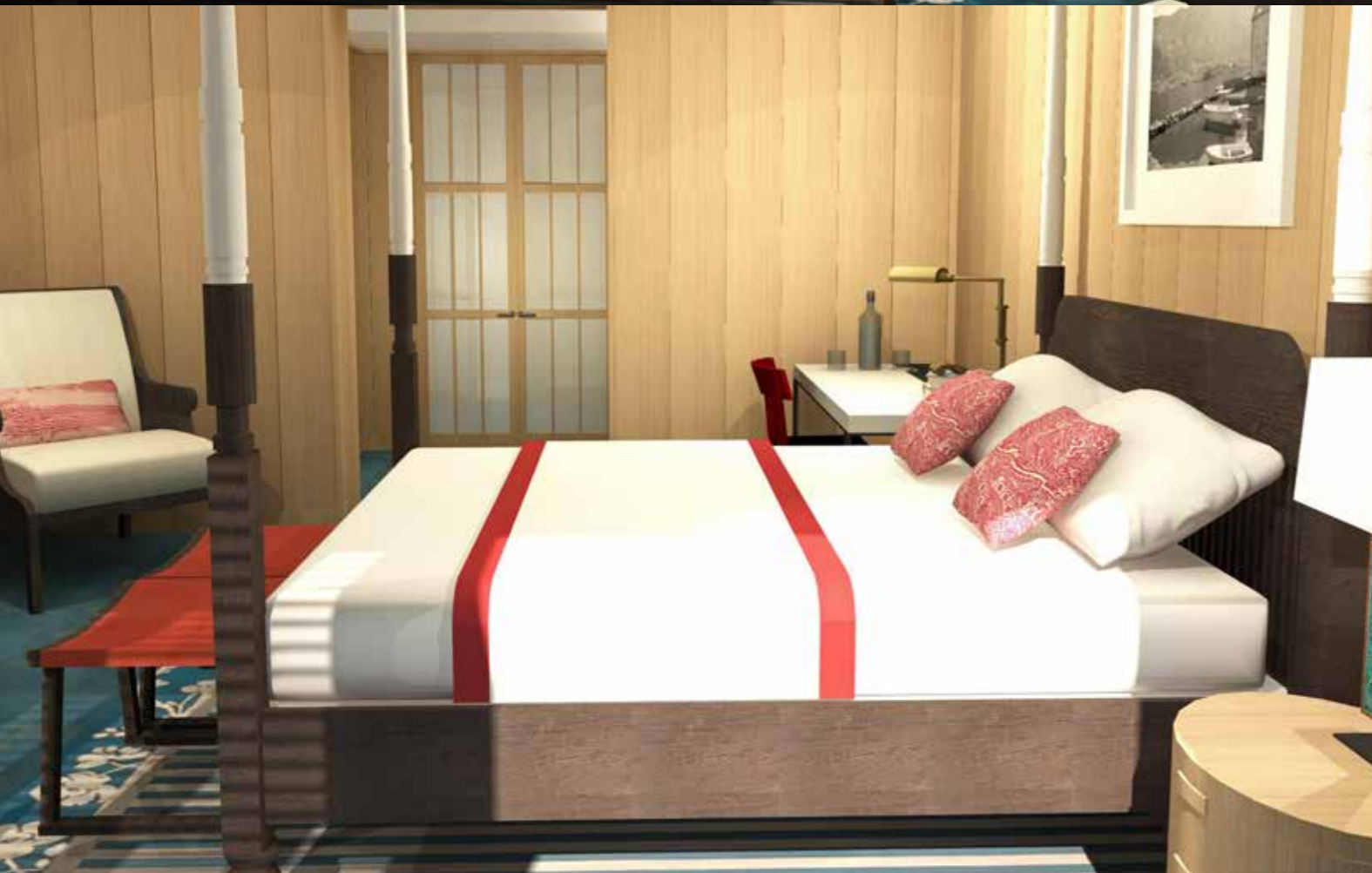
Resort Hotel, Montenegro

Project Orange were successful in reaching the final stages of a pitch to design a large 5* hotel resort located on a remote site, near Tivat in Montenegro. The scope of the project included the complete interior design of the guestrooms and public areas, as well as the private 5 bedroom villas located along the bay.

Taking inspiration from the stunning views and natural setting of the bay, both the guestrooms and villas have been designed in the spirit of 'rustic luxe', a tranquil haven characterised by the use of natural materials redolent of the local landscape.

The interior architecture of the private villa expresses a language of craftsmanship and construction, where timber and stone floors, ceiling beams and deep hardwood windows are married with exquisite linens, silks and leathers in perfect balance.

The guestrooms of the main hotel have been designed as a grand suite of residences set within a series of elegant and contemporary seaside lodge buildings. The use of a strong horizon line of vertical timber panelling within the room brings the outside in, referencing the scented pinewoods that surround the site, whilst the floor is a handmade blue glazed tile to evoke the sea.

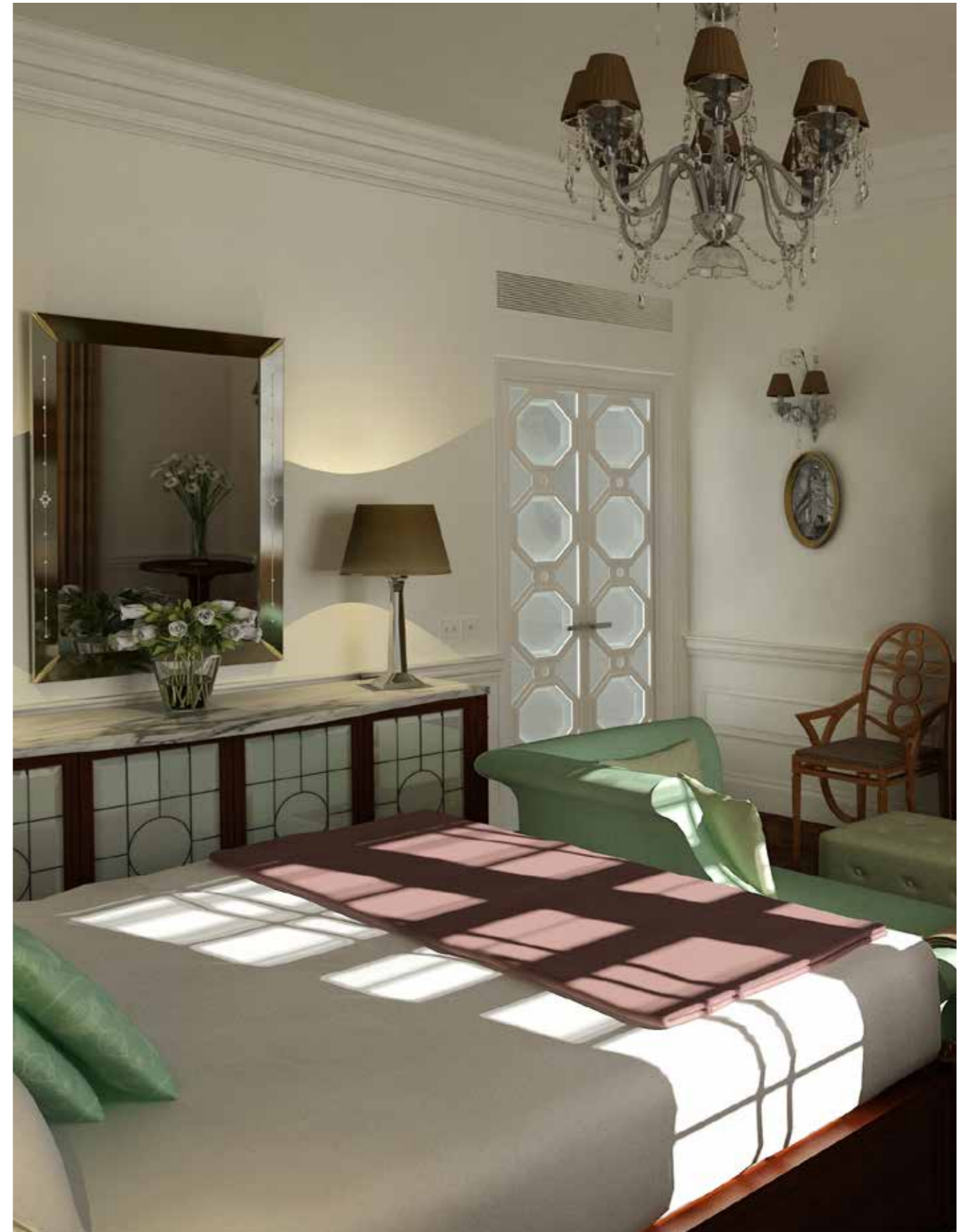
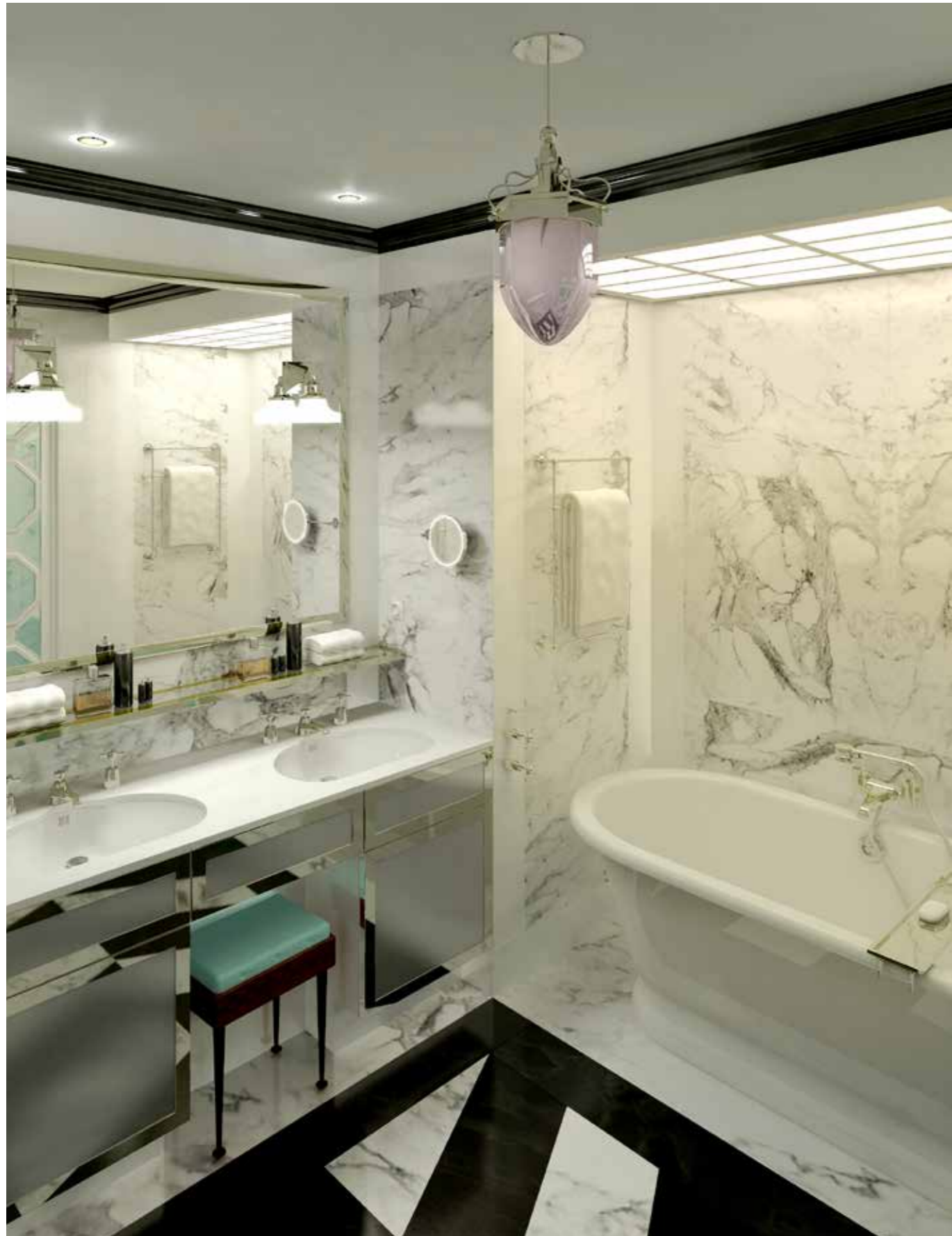




The Poultry Hotel

Project Orange were commissioned to collaborate in the refurbishment and conversion of Lutyens' Midland Bank into a luxury hotel. The concept for the new bedrooms and bathrooms draws its inspiration from the beautifully preserved original panelled rooms found on the fourth floor and originally designated as directors' offices. The aim is to create a sense of luxury and glamour within this prestigious building and to fuse the past with the present, offering outstanding service with style.

We have suggested that the building was in fact always a hotel and that all we have done is to gently refurbish a forgotten gem.



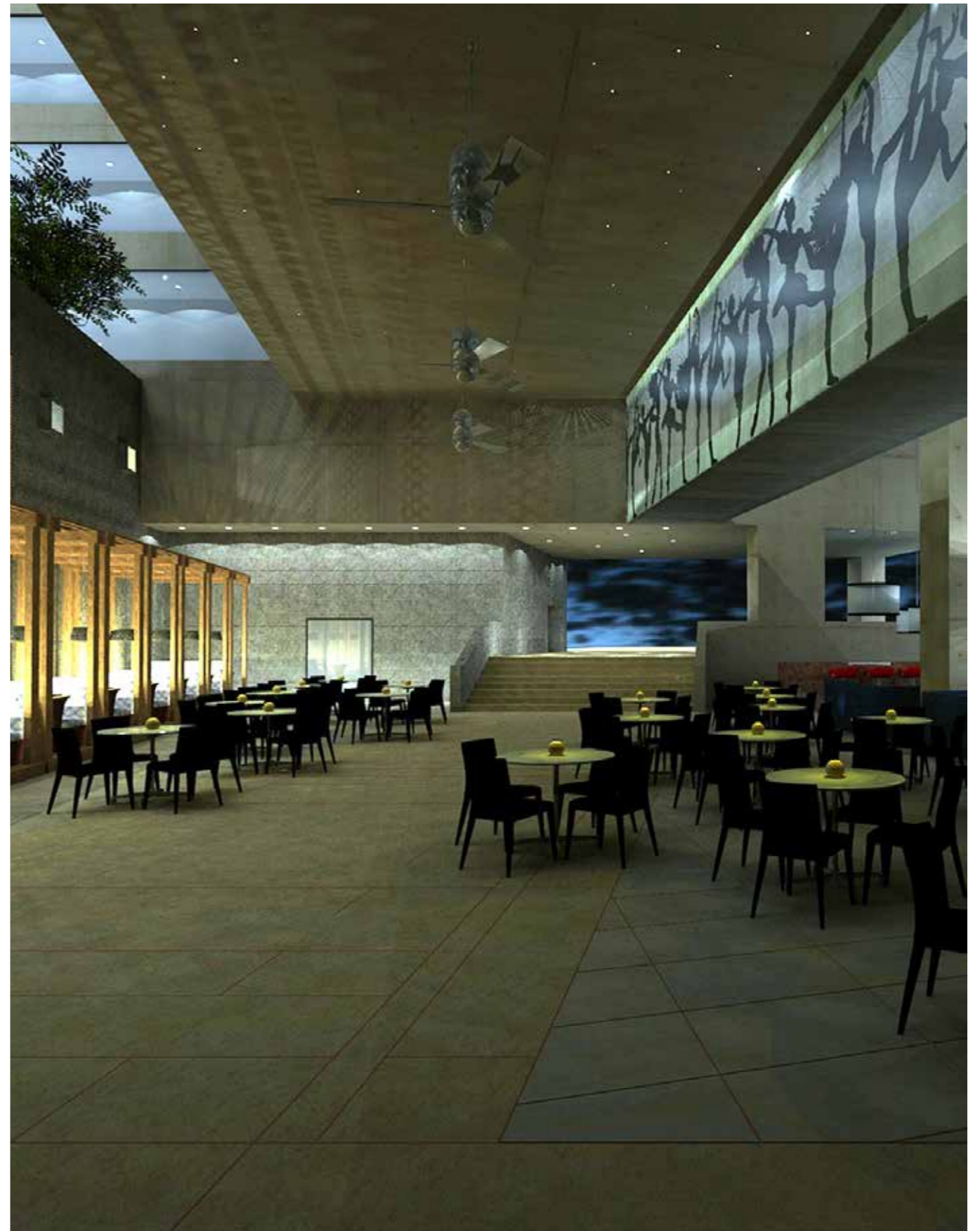


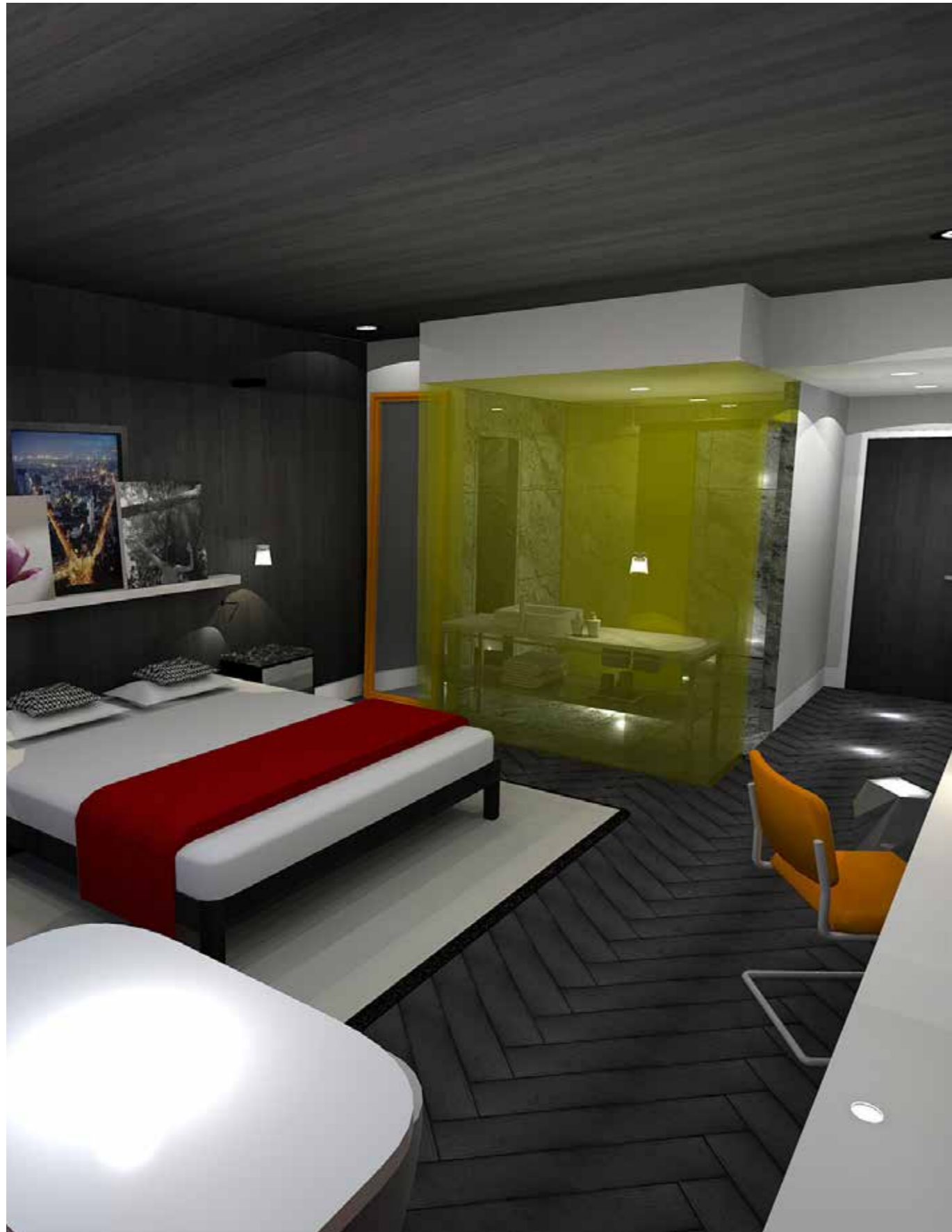
The Park Hotel Pune

The location for the Park Hotel Pune is next to the Mutha River and in the heart of this historic city. Renowned as 'The Oxford of the East' and home to many universities and colleges our concept is to understand the hotel as a hub of knowledge. The building itself represents a 'campus' with the different faculties housed within.

This narrative approach allows each space to express its own personality within the framework of the overall construct – both physical and intellectual. We also believe that a hotel is more than just a place to spend the night, but rather a Cultural Hub for locals and visitors alike.

This attitude is in line with the Park Hotels' progressive outlook and serves to strengthen the brand and create a point of difference with its competitors. It allows the hotel to become part of the community.







Hotel Awards

2012 BD Architect of the Year Awards / short-listed: Small Hotel Room Competition
2011 World Interiors Festival / commended / Hoxton Hotel
2010 FX Awards / finalist: Hotel / Hoxton Hotel
2009 BD Architect of the Year Awards / winner: Interior Designer of the Year
2009 European Hotel Design Awards / short-listed: Restaurant / Fitzwilliam Hotel Belfast
2008 FX Awards / finalist: Best Bar Interior / I-Bar
2008 FX Awards / finalist: Best Hotel Interior / The Park Hotel
2007 BD Architect of the Year Awards / winner: Interior Designer of the Year
2007 Sleeper Awards / winner: Best Interior Design Hotel, Bar... / Eynsham Hall
2007 FX Awards / highly commended: Best Hotel / Farnham House
2007 FX Awards / finalist: Best Bar, Restaurant / Eynsham Hall
2006 FX Awards / finalist: Best Hotel / Chiswick Moran Hotel
2005 FX Awards / finalist: Best Hotel / Fitzwilliam Penthouse, Ireland

Credits

Photos by:
Pallon Daruwala
Gareth Gardner
Tony Higgings
Ed Kingsford
Richard Learoyd
Barry Murphy
Amit Pasrica
Shamanth Patil
Ali Rangoonwala

Visualisations by:
Dom
Project Orange

Project Orange team:
Alesia
Barry
Billy
Christopher
Emma
Guido
Holly
Ian
James
Jamie
Josh
Rachael
Ruth
Thomas
Tom

Copyright Project Orange

project orange

Architects & Designers
1st Floor, Cosmopolitan House
10A Christina Street
London EC2A 4PA

T: +44(0)20 7739 3035

F: +44(0)20 7739 0103

www.projectorange.com